

Courthouse Adventure Book



By Judge Mary Lou Alvarez

A Note From Judge Alvarez

Hello Friends,

It is an honor to be your judge of the 45th District Court.

As a judge I help families in Bexar county, which includes San Antonio, Texas and several other cities. My motto is “Justice Without Exception”. That means that everyone should be treated in a fair and unbiased way every time they go to the Courthouse.

In this activity book you will find a crossword puzzle, fun facts and even coloring pages that I hope will educate you about our courts.

I hope that this book finds you well and that it inspires you with useful information about our county and our judicial system.

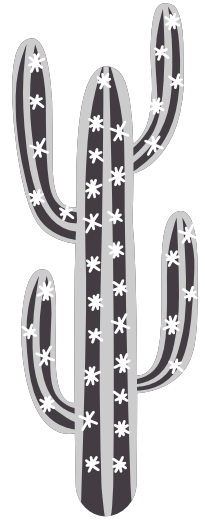
Respectfully,

ML Alvarez

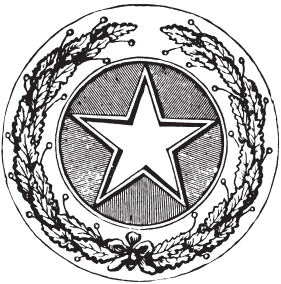
Judge Mary Lou Alvarez
45th District Court
Bexar County, Texas



Fun Facts About Bexar County



It is the 4th largest county in Texas
& 16th largest county nationally



The Bexar County Courthouse is the largest
and oldest continuously operated historic
courthouse in Texas

**IT WAS ORIGINALLY HOME TO OVER 125
INDEPENDENT NATIVE AMERICAN TRIBES KNOWN
AS THE COAHUILTECHANS.**

Bexar County has a span of about 1300 square miles

There are 19 cities inside of Bexar County

OVER 2 MILLION PEOPLE LIVE IN BEXAR COUNTY



**TEXAS SEPARATED
THE ORIGINAL BEXAR
COUNTY AREA INTO
128 SEPARATE
COUNTIES.**



About Texas District Courts

Texas District Courts are the trial courts of general jurisdiction in Texas. This means that they handle cases that involve criminal issues, family matters, cases involving land, elections, and civil matters.

Each District Court has a judge that presides over it.

Texas is still a state in which the voting public selects their judges through a partisan election process. Once elected, District Court Judges serve the community for a four-year term.

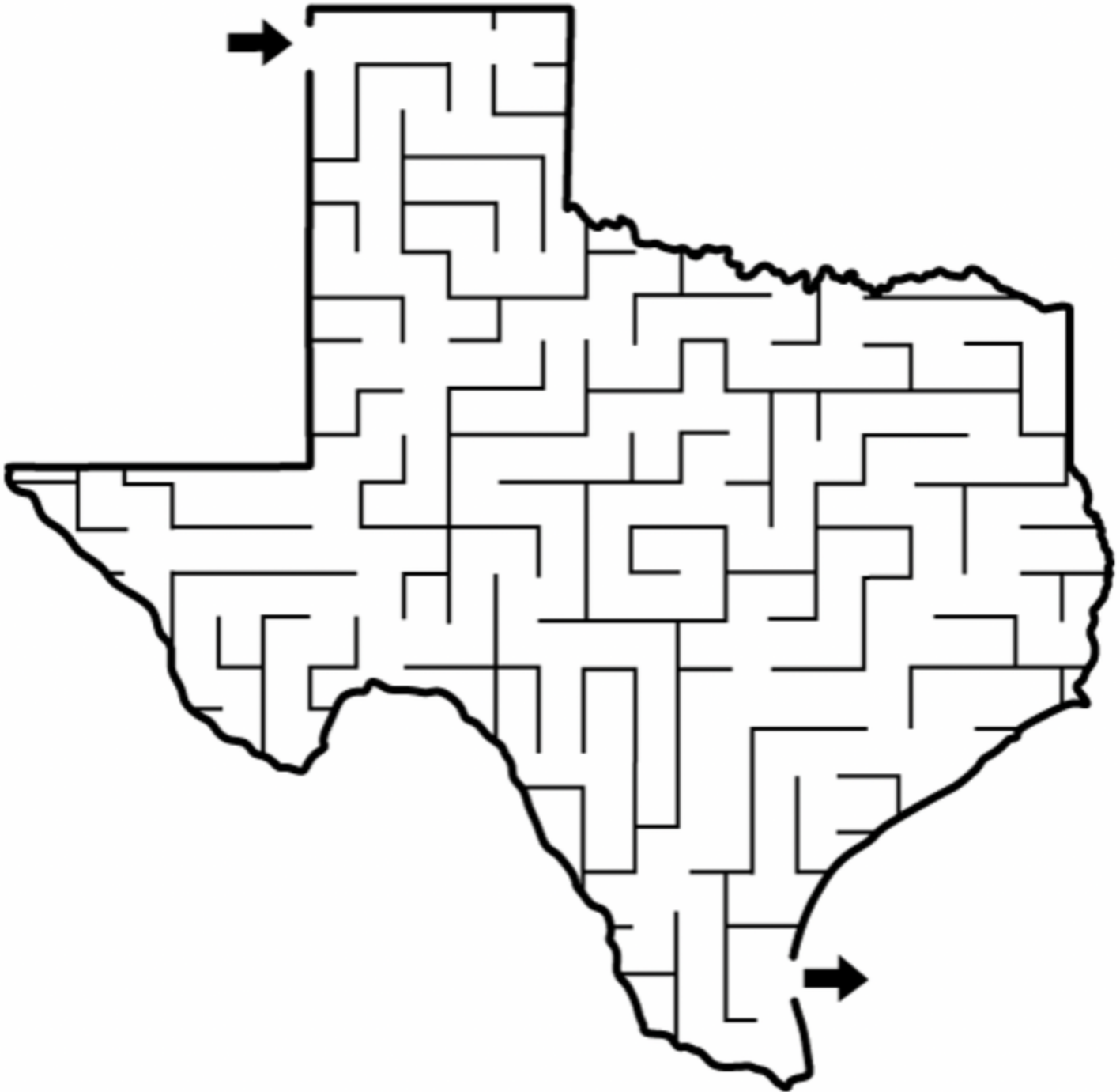
The qualifications to serve as a District Judge are:

- ☒ Be a citizen of U.S. and of Texas
- ☒ Aged 25 to 74
- ☒ Resident of the district for at least 2 years
- ☒ A practicing lawyer or judge, or both combined, for at least 4 years

For more information visit www.txcourts.gov



Follow the Texas Maze



About The Bexar County Courthouse

The cornerstone was laid in 1892 and the entire courthouse took five years to construct.

The courthouse was designed by renowned architect, James Riely Gordon.

It is made of granite and red sandstone, and its roof is made of distinctive green and red tiles.

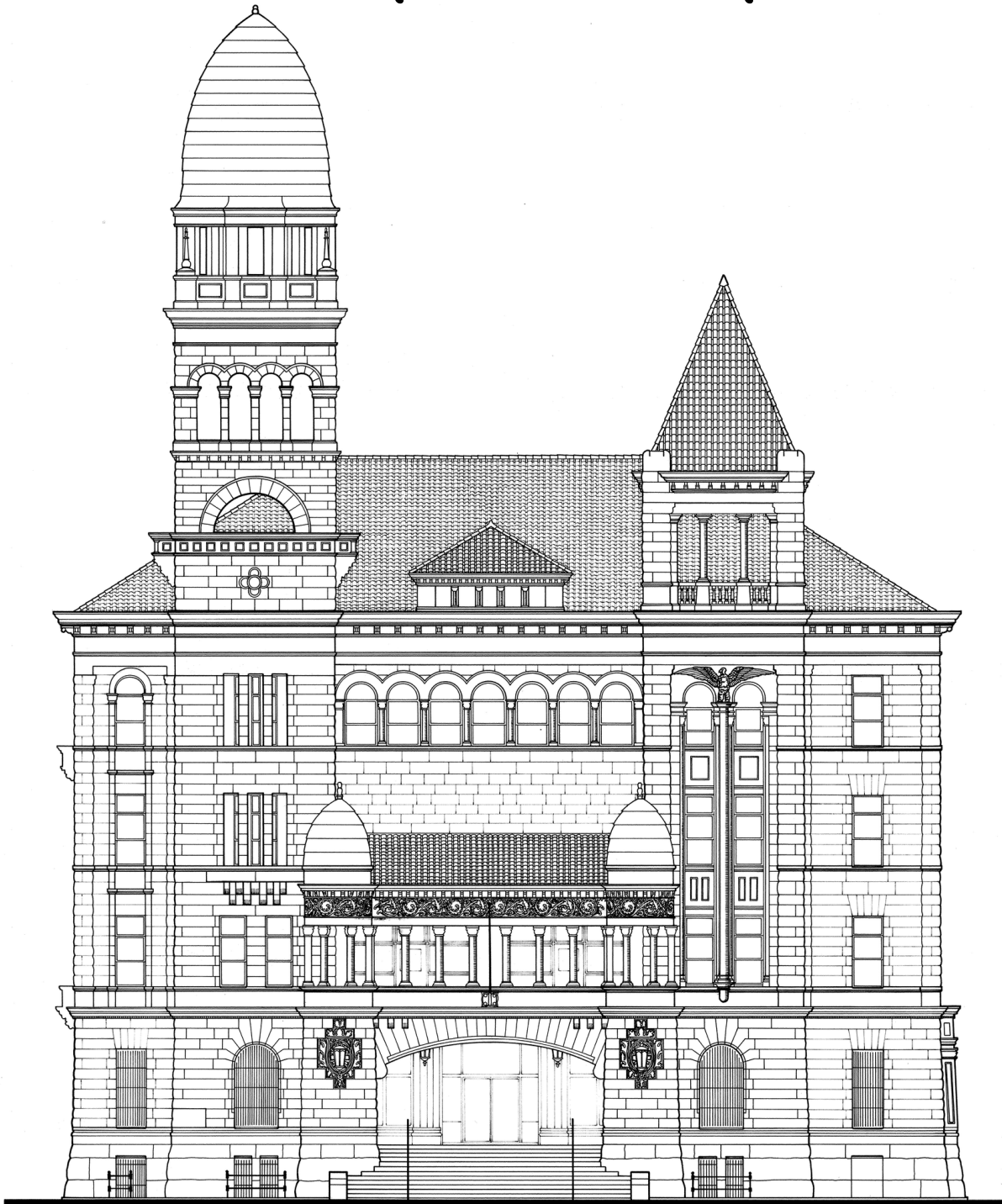
Since its initial construction the Courthouse has had four major additions.

Many courtrooms that were originally designed to be two floors in height and were later divided into separate floors to capitalize on space.

The Bexar County Courthouse is the largest and oldest continuously operated historic courthouse in Texas established in 1897.



Color The Courthouse



Architectural Drawing of the Bexar County Courthouse by By William H. Edwards, 1968
Under The Direction Of The Office of Archeology And Historic Preservation, National Park Service
United States Department of the Interior

The Symbols of Bexar County



The State Seal of Texas was adopted by The Secretary of State in June 1992 as the official design of the state seal. Juan Vega of the Texas Water Development Board designed the art for the seal.

This simple and graceful design now appears on official documents, state offices, departments, and agencies. It also identifies state aircraft and adorns both the original and new portions of the Texas Capitol.



Bexar County has adopted the Texas State Seal with the words "The State of Texas" and "County of Bexar". Counties commonly have a seal or symbol to identify their government.





The Official Coat of Arms for Bexar County was adopted by Commissioners Court on December 22, 1972. The Coat of Arms combines four heraldic fields topped with a coronet. A banner below the heraldic fields bears the word "Bexar".

On the upper left are the arms of Don Alvaro de Zuniga, Duke of Bexar in Spain, including the gold chains of Navarre, which in Spain are used in a similar manner to today's United States Medal of Honor.

At upper right is Mission San Francisco de Espada which honors the works of the Spanish Missionaries.

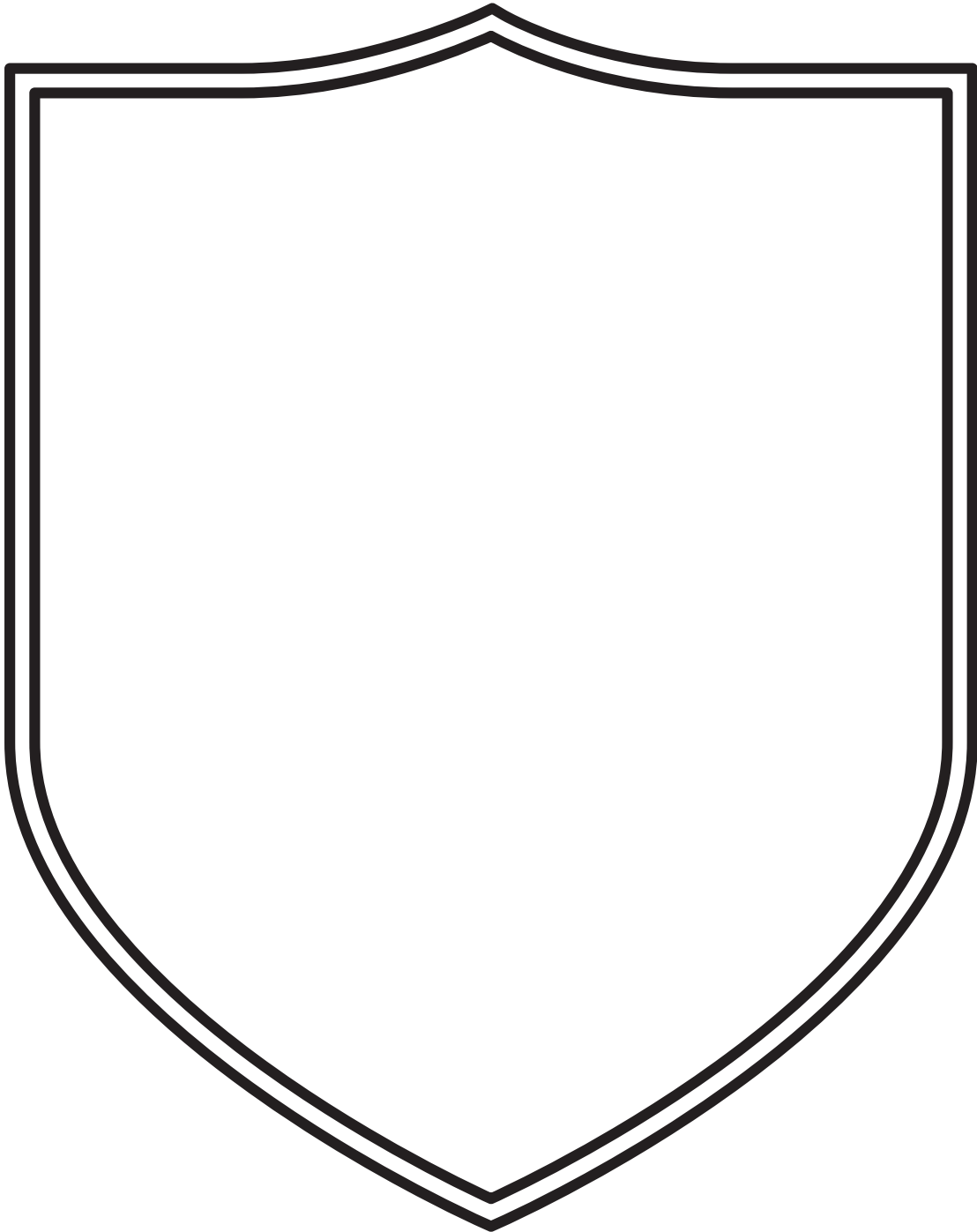
The eagle on the lower left represents both the Aztec eagle of Mexico and the American bald eagle.

At the lower right, the cannon represents the battles for the independence of the Republic of Texas.

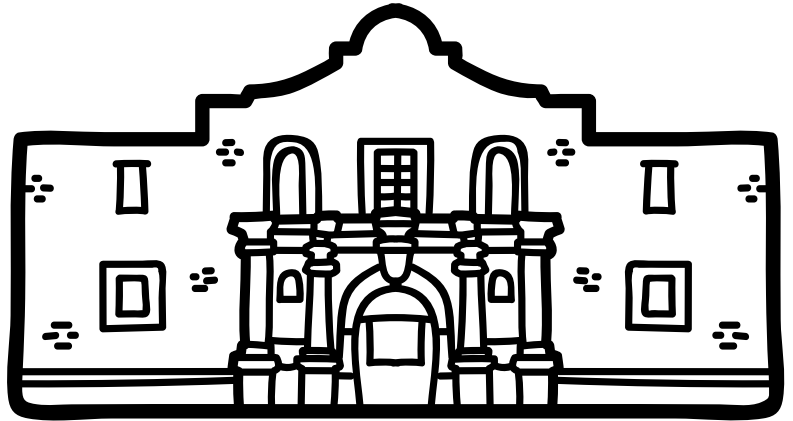
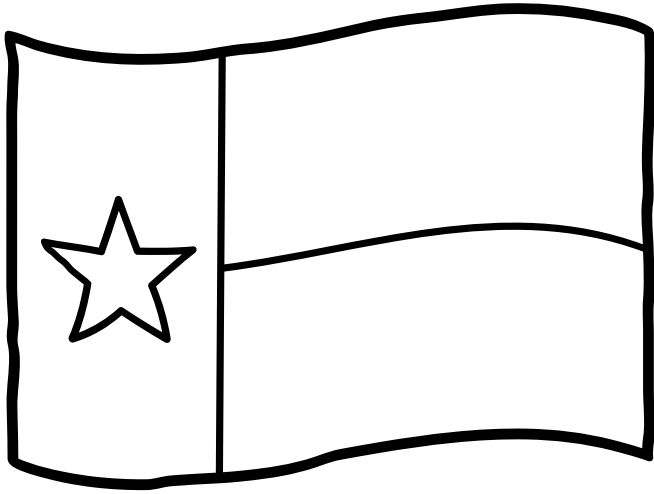
The coronet surmounting the quadrants of the shield represents a duke of Spain.

The coat of arms was designed by Thomas A. Wilson and illustrated by Ramon Vasquez y Sanchez, with the cooperation and approval of the Spanish government and appropriate organizations in both Texas and Spain. It was confirmed and approved by Fernando Muñoz Altea, King of Arms of the Royal House of Borbón-Two Sicilies.

Draw Your Own Coat Of Arms



Color The Symbols Of Texas



WORD MATCH

MATCH THE WORDS TO THE CORRECT PICTURE

☐

☐ GAVEL

☐

☐ COUNTY SEAL

☐

☐ JURY BOX

☐

☐ NAME PLATE

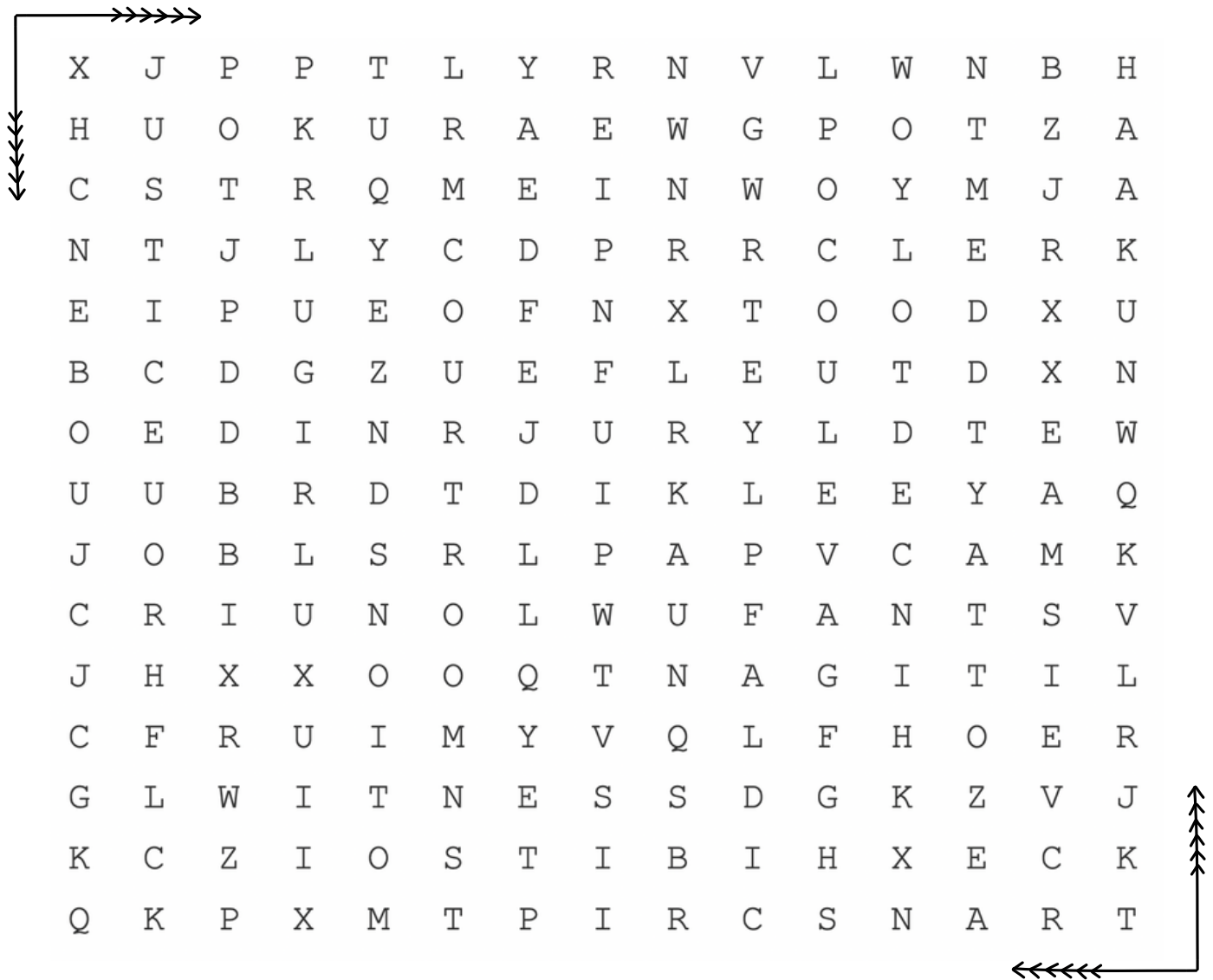
☐

☐ MICROPHONE

COURTROOM WORD SEARCH

Find the word in the puzzle. | Words can go in any direction.

Words can share letters as they cross over each other.



ATTORNEY
BENCH
CHILDREN
CLERK
CODE

COURTROOM
DEPUTY
EXHIBITS
EXPERT
GAVEL

JUDGE
JURY
JUSTICE
LAW
LITIGANT

MOTIONS
RIGHTS
TRANSCRIPT
TRIAL
WITNESS



Lady Justice



Lady Justice holds scales to represent the impartiality of the court's decisions.

She holds a sword as a symbol of the power of justice.

Lady Justice is based on the Greek Goddess Themis – honored as clear-sighted – and the Roman Goddess Justitia – honored as representing the virtue of justice.

She is one of the most recognizable symbols of the judiciary in the United States.

Lady Justice is blindfolded because justice is unbiased and should not be based on a person's appearance or other outside influences.

The Gavel

Gavels are typically made of wood and paired with a base on which it can be hit.

Judges use gavels to maintain order in the courtroom.



According to tradition, Vice President of the United States John Adams used a gavel as a call to order in the first U.S. Senate in New York in 1789.

The U.S. Senate and House of Representatives also use gavels.

Some believe that the use of the gavel goes all the way back to Medieval England.



Mary Lou
ALVAREZ
DISTRICT COURT JUDGE
JUSTICE WITHOUT EXCEPTION!

Courthouse Adventure Book

This activity book was published by
Judge Mary Lou Alvarez
of the 45th District Court.

Design and production support for this
publication was provided by
Robert Vargas III,
RV3 Strategies.

About Judge Mary Lou Alvarez

Judge Mary Lou Alvarez
presides over Bexar
County's 45th District Court.

She was first elected in 2018
and became a judge after 15
years of practice. She spent
the majority of her practice
working at Texas RioGrande
Legal Aid. There she
represented victims of
domestic violence during
divorce, custody, and
protective order litigation.

Judge Alvarez is
committed to
Justice Without
Exception.

The painting on the front cover
depicting the Alvarez Family was
created by local artist Hector Garza.

For more information visit
these helpful websites:
www.txcourts.gov
www.sos.state.tx.us
www.bexar.org

